

Figure S1. Forest plot of the prevalence of High WC among women with polycystic ovary syndrome

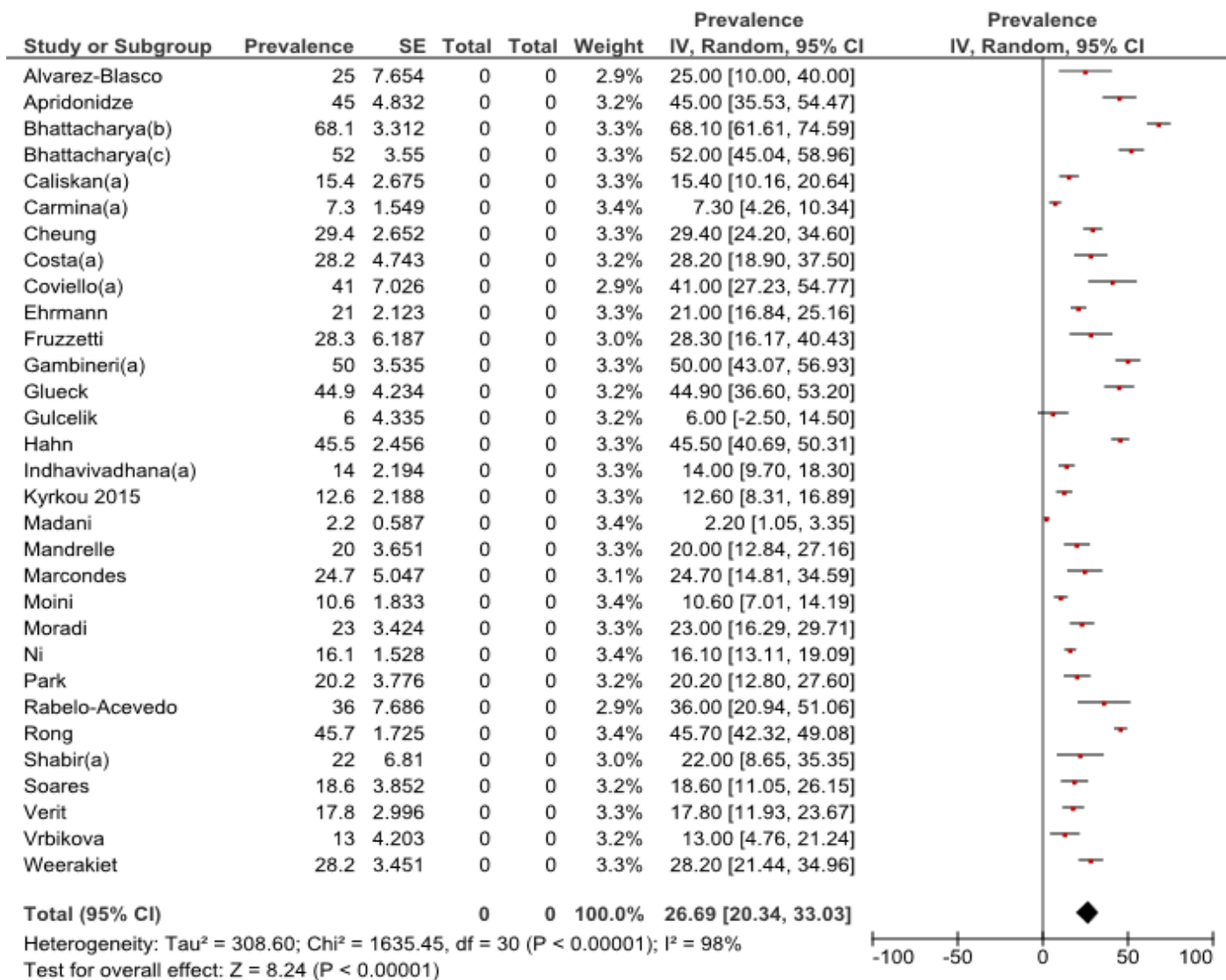


Figure S2. Forest plot of the prevalence of HTN among women with polycystic ovary syndrome.

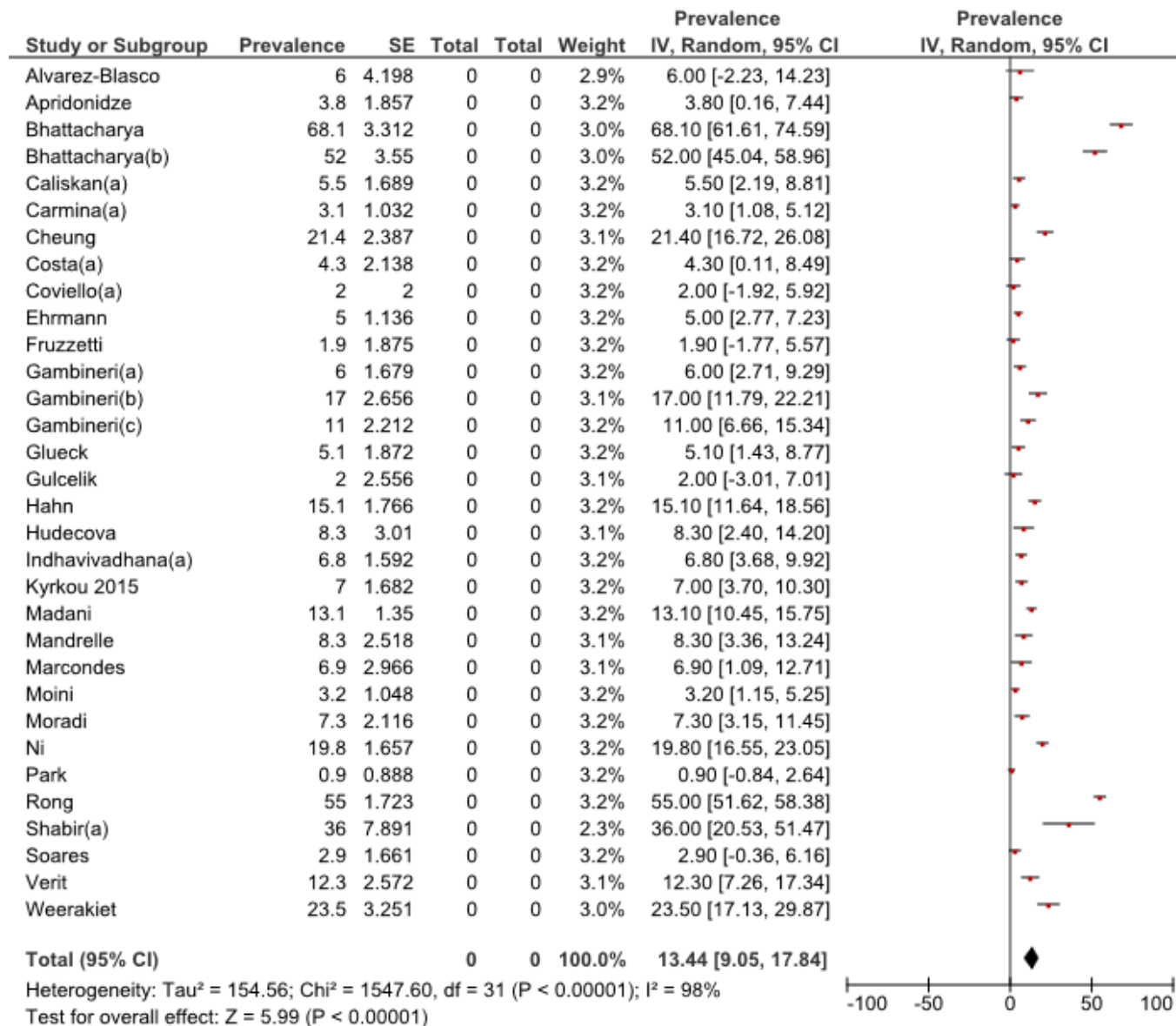


Figure S3. Forest plot of the prevalence of High FBS among women with polycystic ovary syndrome.

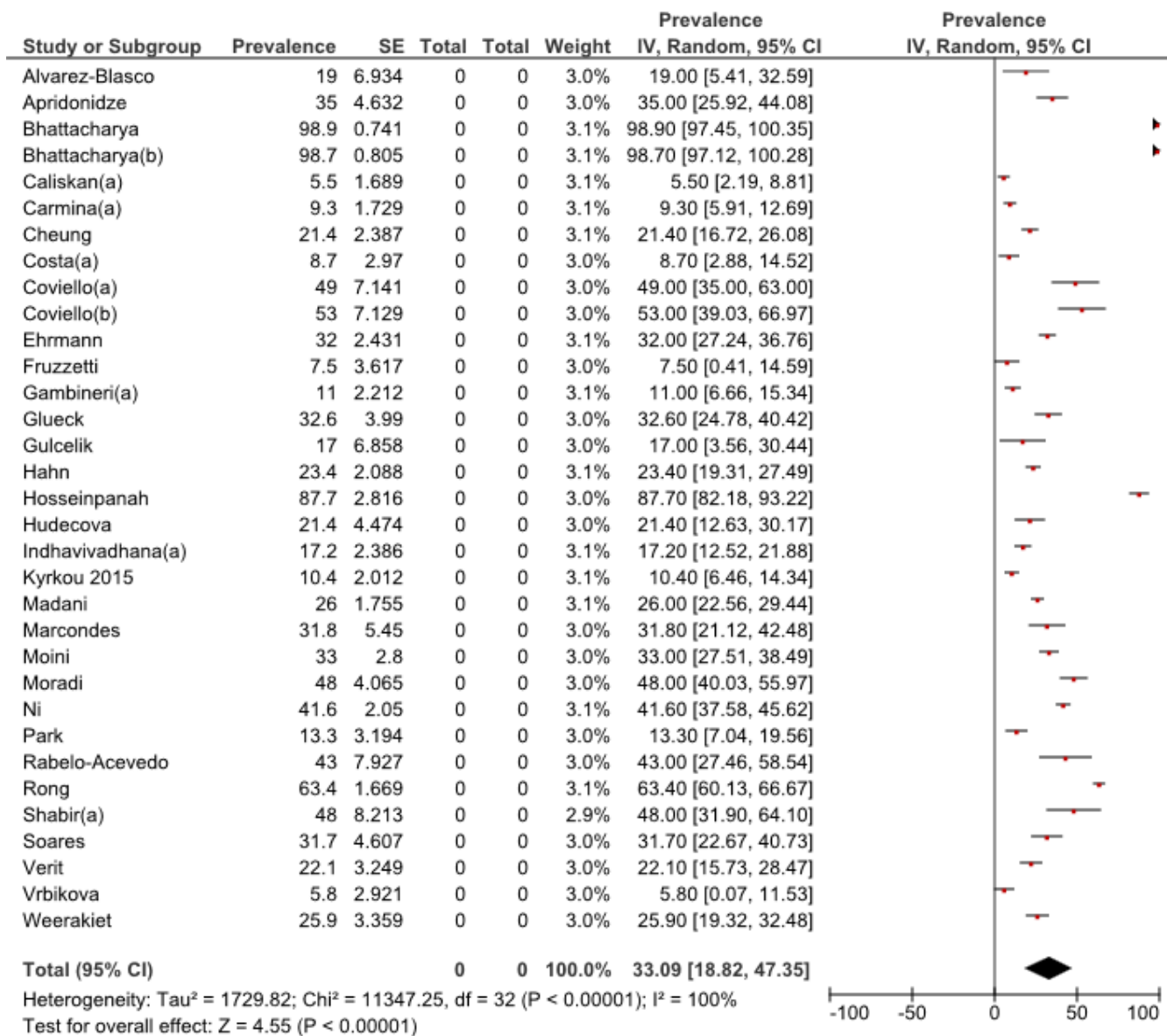


Figure S4. Forest plot of the prevalence of High TG among women with polycystic ovary syndrome.

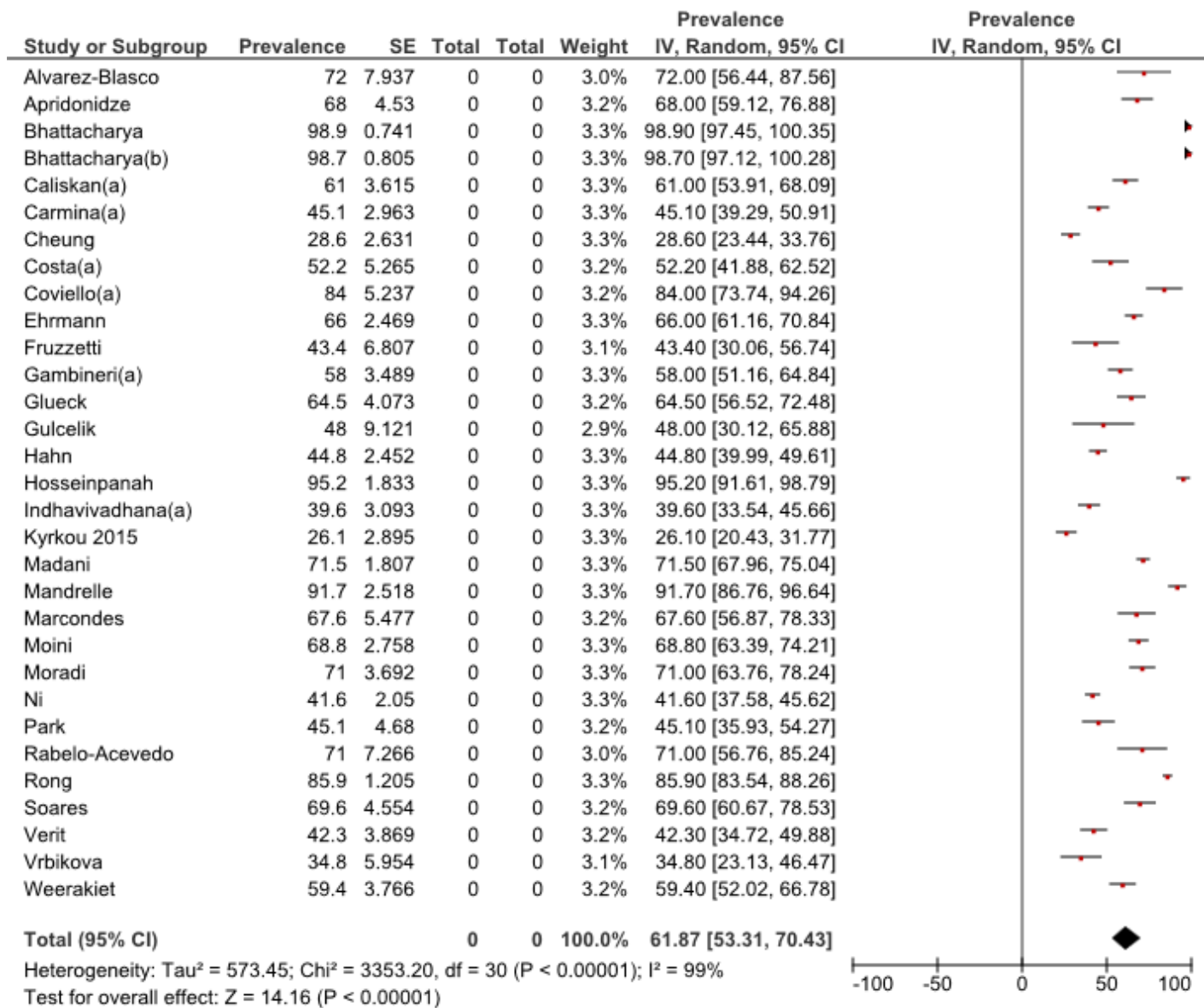


Figure S5. Forest plot of the prevalence of Low HDL among women with polycystic ovary syndrome.

Table S1. The risk of bias assessment for cross-sectional studies included into the meta-analysis

	1.Representativeness of the sample:	2.Sample size:	3.Non-respondents:	4.Ascertainment of the exposure (risk factor):	5. Confounding factors are controlled.	6.Assessment of the outcome:	7.Statistical test:	Overall Score
Pillai BP(2015)	C	b	c	B	-	c	a	3
Madani T(2015)	C	b	c	b	-	c	a	3
Shabir I(2014)	b	b	c	b	-	c	a	4
Figurova J(2014)	c	b	c	b	-	c	a	3
Kim MJ(2014)	b	b	c	b	a	c	a	5
Mandrelle K(2012)	c	a	c	b	a	c	a	5
Moini A(2012)	c	a	c	b	-	c	a	4
Ishak A(2012)	c	a	c	b	a	c	a	5
Bhattacharya SM(2011)	c	a	c	b	a	c	a	5
Mehrabian F(2011)	c	b	c	b	a	c	a	4
Gangale MF(2011)	c	b	c	b	-	c	a	3
Dey R(2011)	c	b	c	b	-	c	a	3

Bhattacharya SM(2010)	c	b	c	b	-	c	b	3
Indhavivadhana S(2010)	b	a	c	b	-	c	a	5
Fruzzetti F(2009)	c	b	c	b	-	c	a	3
Moradi S(2009)	c	b	c	b	-	c	a	3
Ni R(2009)	c	b	c	b	-	c	a	3
Soares EMM(2008)	c	b	c	b	-	c	a	3
Cheung LP(2008)	c	a	c	b	a	c	a	5
Weerakiet S(2007)	c	b	c	b	-	c	a	3
Marcondes JAM(2007)	c	b	c	b	-	c	a	3
Ehrmann DA(2006)	b	b	c	b	-	c	a	4
Coviello AD(2006)	b	b	c	b	-	c	a	4
Leibel NL (2006)	b	b	c	b	-	c	a	4
Apridonidze T(2005)	b	b	c	b	b	c	a	5
Rabelo-Acevedo M(2005)	b	b	c	c	-	c	b	4
Floria E(2004)	b	b	c	b	-	c	a	4

****indicating 2 scores**

*** indicating 1 score.**

- Minimum and maximum scores are 0 and 9, respectively.

1)

- a) Truly representative of the average in the target population. * (all subjects or random sampling)
- b) Somewhat representative of the average in the target population. * (non-random sampling)
- c) Selected group of users.
- d) No description of the sampling strategy.

2)

- a) Justified and satisfactory. *
- b) Not justified.

3)

- a) Comparability between respondents and non-respondents characteristics is established, and the response rate is satisfactory. *
- b) The response rate is unsatisfactory, or the comparability between respondents and non-respondents is unsatisfactory.
- c) No description of the response rate or the characteristics of the responders and the non-responders.

4)

- a) Validated measurement tool. **
- b) Non-validated measurement tool, but the tool is available or described.*
- c) No description of the measurement tool.

5)

- a) The study controls for the most important factor (select one). *
- b) The study control for any additional factor. *